

TEMs Links



March/April 2006 VOLUME 7 ISSUE 1

CC's Corner



Dear All,

Welcome to the March/April 06 issue of TEMs Links. As we speak, I am formulating re-accreditation documents for the MTEM program. The University has an internal review or course accreditation process where all courses are assessed every three years in terms of performance, relevance and quality. The review will examine course themes and content, structure, relevance and identify areas for improvement. We take on board feedback from students, both formal (SELT) and informal, plus we examine enrolment patterns. I welcome feedback on your impressions of the course experience, don't hesitate to let me know your thoughts.

We have also submitted the MTEM program to the Carrick Institute for Teaching and Learning in Higher Education (www.carrickinstitute.edu.au/carrick/go) for excellence in teaching. Our application is being assessed internally at present and then it is entered into these national awards. It will be a good exercise in gaining feedback on the course structure and quality. If we win, you will all be part of or have graduated from an awarding winning course ! I will keep you informed of how we go.

Speaking of awards, congratulations to John Bonney for his medal in recognition of his contribution to Anangu ranger training and furthering joint management during the twentieth celebration ceremony of the hand back of Uluru. And congratulations to our award winning graduate Janelle Fisher (and Carl!) on the birth of Jordan. An HD to her!

There are some outstanding student contributions this issue, one from Anthony Kerr on the Garma Festival, from Ian Dixon and Abilio De Fonseca in Timor-Leste and finally Erin Aucoin-Wenkoff, who has reported on activities in Laos. That's it from me, hope your semester goes well.

Regards,
Lindsay Hutley
Course Coordinator
CDU, Darwin

INSIDE THIS ISSUE:

RiverLandscapes

International Cloud Experiment

Issues & Challenges in Timor-Leste

MTEMer in Laos

MTEMer Wins Award

Graduate Updates

From Rat-race to Gamma

Indigenous NRM at Coast to Coast Conference

Professional Doctorate—fee waiver

Web-Sites

Seminars and Conferences

Birds Australia Day in Darwin

Book Review

TEMS LINKS

- *This newsletter aims to keep students and graduates of the Tropical Environmental Management Program in touch with each other and with staff in the course.*
- *Welcomes contributions from students and others, and should be sent to:*

TEMs Links
Cheryl Arnott
TS-CRC, CDU
Tel 08 8946 6834
Fax 08 8946 7107
cheryl.arnott@cdu.edu.au

National Riparian Lands Workshop

Graduate Update—by Ian Dixon

Research Associate for the Tropical Savannas CRC at Charles Darwin University

I completed my GDTEM in 2001 and am currently working on my MTEM project. In March 2006, I was fortunate enough to be invited to present at the National Riparian Lands R&D Program Synthesis Workshop, hosted by Land & Water Australia, Tropical Savannas CRC, School for Environmental Research (CDU) and NT DNRETA.



The group checking out some of the erosion due to flooding.

The theme of the workshop was "Tailoring the science, practical tools and communication products to regions". Land & Water Australia's National Riparian Lands R&D Program has undertaken eleven years of research into how riparian areas function, how they can be better managed, and how to engage local communities in protecting, maintaining and rehabilitating these important parts of the landscape. At the end of the first phase of the Program, a series of workshops were held across Australia to disseminate research findings and to link people to the range of practical tools that had been developed. The second phase of the Program has now been completed and these workshops are being run again as new sci-

ence, new products and new ways of thinking about how to work with communities have been developed. The workshop ran for one and a half days, with participants getting the opportunity to learn about the most up to date science from the researchers who did the work.

The topics featured in the workshop were:

- Impact of riparian vegetation on bank stability (Ian Rutherford)
- (Tropical) Rapid Appraisal of Riparian Condition (Amy Jansen, Michael Douglas and Ian Dixon)
- Managing high in-stream temperatures using riparian vegetation (Peter Davies)
- Assessing capacity of communities to undertake riparian restoration projects (Siwan Lovett)
- Impact of riparian vegetation on flooding (Ian Rutherford)
- Overcoming impediments to riparian management and communicating outcomes (Siwan Lovett)

The 30 workshop participants ranged from students to natural resource managers from NT DNRETA, Greening Australia, CDU, NT Airports and private consultants.

I presented the Tropical Rapid Appraisal of Riparian Condition (TRARC). The TRARC is being developed by the Tropical Savannas CRC in collaboration with Land & Water Australia, Charles Darwin University and James Cook University. The TRARC is a user-friendly assessment and monitoring tool designed for northern Australia's land managers. It allows the land manager to objectively score indicators of condition (e.g. vegetation cover, logs and regeneration) and identify pressures such as fire,

(Continued on page 3)

(Continued from page 2)

weeds, erosion and animal damage. Summary scores for each site can be used to provide a quick overview of the current condition and pressures. This will help land managers to decide on management projects that protect, maintain or restore these habitats. Over time, the land manager can repeat the TRARC to monitor the change in condition due to management activities or natural events.

After the talks we visited Rapid Creek where we discussed the theories raised in the presentations. Guest presenters from southern Australia were amazed at the beauty and condition of the creek, especially as it is surrounded by an airport, sports stadium and suburbs. Judging by their photos of southern streams, they were enlightening to see a creek with crystal-clear water and trees.

Ian Dixon Research Associate Tropical Savannas CRC
Charles Darwin University Darwin, NT 0909
Ph: 08 8946 6761 Fax: 08 8946 6847
ian.dixon@cdu.edu.au



A popular swimming hole at Yankee's Pool behind the Airport Resort. A new lookout platform and footpath has been constructed to help reduce the impact of people. That's me hiding (asleep) behind the tree.



The Tropical Warm Pool International Cloud Experiment Darwin, January 2006 Cloud and rain characteristics in the Australian Monsoon

As you may be aware, the Groundbreaking Tropical Warm Pool International Cloud Experiment has wound up with much praise for producing one of the most comprehensive data sets of tropical cloud properties ever collected.

Launched in January, data collected in the experiment will enhance the understanding of tropical clouds and improve weather and climate forecasts. Charles Darwin University played a key role in the experiment providing facilities and invaluable logistic support to the 'on-location' project teams.

The experiment involved over 200 scientists from 10 countries and 30 institutions, and was one of the largest weather experiments to be undertaken anywhere in the world. It included 20 missions by five research aircraft flying at altitudes ranging from 60 feet to 55,000 feet and the launch of 1000 weather balloons from various sites around Darwin.

It is hoped the research will ultimately improve our ability to forecast regional weather and simulate climate change and allow scientists to study the development and movement of the monsoon low. (from the CDU eNews, Issue 327 March 2006)



Further information is available at <http://www.pbse.com/thunor/twpice>



"Hector" seen from Darwin



Photos courtesy of Gary Eckert, Bureau of Meteorology

Environment: Issues and Challenges in Timor-Leste (East Timor)

East Timorese MTEM graduate **Abilio da Fonseca** now works as program manager for UNDP Environment Unit for Timor Leste. Penny Wurm was fortunate enough to catch up with Abilio on a recent trip to Dili, when Abilio provided the following article for TEMsLinks. Read on to find out more about the environmental challenges facing Timor Leste and how UNDP funding and projects aim to help.

With 75 % of the population dependent on subsistence agriculture, the Timor-Leste environment is the treasure and life-line of the country. It must be properly managed to serve its people's development needs as well as future generations. The unspoiled nature of Timor-Leste is also believed to harbour several endangered species of animals.



A small hill with very scarce number of small trees. Landslides happen regularly in the rainy season.

Timor-Leste is not well endowed with natural resources and much of its terrain is steep with only a thin covering of productive soil. Studies have shown about 44 % of the country has a slope of about 40 % which is not suitable for sustainable cultivation and may require reforestation or crops providing plant cover. To compound the situation even further rainfall is low but when it arrives, it's often so

incredibly heavy that it washes the soil away in flash floods.



Hilly terrains are at risk of erosion during intense storms.

To deal with these ongoing issues, some farming communities have developed indigenous forms of soil conservation, but it is under the pressure of population growth and the need to increase productivity, many of farmers with limited land management techniques. Then also have adopted slash and burn agriculture which have contributed to erosion and the steady loss of soil covered over time.

The situation has been exacerbated by deforestation, which has become more substantial during the last three decades. One of the country's most valued forest resources is sandalwood which has now been reduced to just a few stands due to of over-exploitation. Another problem is that many rural communities rely on selling wood for fuel as source of family income and as a result, have contributed to deforestation. It is estimated that the forest cover has fallen by nearly 30 % in the period of 1972 to 1999.

(Continued on page 5)

Environment: Issues and Challenges in Timor-Leste (East Timor)

(Continued from page 4)

For the urban population, the environmental issue is pollution. Nowadays, there are no real effective systems in place for waste management that loom as a major problem in urban areas and along several coastal zones. Dili has a basic sewerage system and limited collection and disposal of solid waste. However, large piles of rubbish accumulate due to illegal dumping and this only further pollutes the groundwater which many people used as drinking water.

Therefore, the promotion of environmental governance is vital to secure the sustainable development of the country and its people. Environmental degradation compromises the health and livelihood of future generations



This photo shows sifting agriculture (slash & burn agriculture).

UNDP is working with the Government of Timor-Leste (GoTL) since 2003 to lay the necessary foundation for the adequate management of the country's natural resources and the environment for the future. Furthermore, UNDP is working to enhance the well-being of people and contribute to the achievement of global environmental goals. Most of the programmes to be undertaken by the Environment Unit at the UNDP office concentrate on:

- a. Strengthening environmental governance
- b. Conserving land and biodiversity resources
- c. Sustainable energy development



Abilio da Fonseca (3rd from right) addressing a meeting on capacity building for environmental management.

Strengthening the Environmental Governance Capacity of Timor-Leste

Environmental governance is central in the overall protection, preservation and sustainability of the use of natural resources. A comprehensive and coherent structure of managing the environment is yet to be created. The overall objective of this program (Governance Capacity) is enhanced capacity of the government to develop and implement environmental governance structures, including policy formulation and coordination mechanisms. The program is endeavoring to achieve the following targets:

- a. National Capacity Self-Assessment
- b. Support Access to MEAs
- c. Coordination mechanisms and strategic planning
- d. Policy/legislation development

Land and Biodiversity Conservation

Land degradation is the priority for natural resources management in Timor-Leste. Accordingly, Timor-Leste has signed the United Nations Convention to Combat Desertification (UNCCD). In this area, UNDP will help Timor-Leste address national land degradation priorities and implement the UNCCD.

(Continued on page 6)

Environment: Issues and Challenges in Timor-Leste (East Timor)



(Continued from page 5)

Timor-Leste has globally significant biodiversity, including forests, lakes and well preserved coastal ecosystems. A proper management of these resources will benefit the people of Timor-Leste as well as contribute to the global environment. Meanwhile, the country does not have the necessary capacity to manage its own this valuable resources. But by signing various multi-lateral agreements, Timor-Leste will have the opportunity to access global technical and financial support to conserve and utilize biodiversity in a sustainable manner.

Marine biodiversity and fish populations are reduced by overfishing. Fishermen are also using bombing for fishing.

Sustainable Energy Development

Energy services to the people in Timor-Leste are still very limited, even in capital Dili. The main electricity supply is not yet available 12 hours a day. Thus, UNDP is working with the GoTL to explore alternative energy resources that aim to improving the quality of life of people at the community level and reduce poverty.

People who live in isolate areas are cutting trees for firewood for heating and cooking. This is because the electricity supply is unable to reach them.



The International consultant is observing firewood cut by community as a source of income (cash) and is used for heating and cooking.



UNDP in Timor-Leste is committed to combating the problems face by the world's newest country. This is believed that more than 40 % of the people of Timor-Leste live in extreme poverty, lacking even the most basis resources required to meet their essential food, clothing, education and house needs

Steep land has a high risk of floods in the rainy season.



BERYL HENDERSON FOUNDATION AUSTRALIAN FEDERATION OF UNIVERSITY WOMEN INC.

BERYL HENDERSON MEMORIAL GRANT

The Beryl Henderson Foundation and the Australian Federation of University Women will in 2006-7 offer a grant of up to \$1250 to assist in completion of a research project being undertaken by a female student or researcher in an Australian university.

The grant is made in alternate years to honour the memory of Beryl Henderson (1897-1990), a leading women's rights campaigner in Britain and later in Australia.

Applications are invited from women who are enrolled in Honours IV or postgraduate programs in Australian tertiary institutions, or embarked on research work with publication in Australia in view. The purpose of the grant is to assist with practical aspects of research, such as intra- or interstate travel to consult library sources, or to consult with research collaborators. All or part of the grant could also be used for obtaining information (e.g. archival material) from overseas which is not available via the internet. It is not envisaged that a grant would be available for equipment such as computer hardware.

The award of the grant is not limited to particular disciplines, but research focusing on issues related to the rights and welfare of women and children will be viewed favourably. Selection will be based on merit.

Please note that only one award of \$1250 is available.

There is no specific application form for this award, but applicants are asked to provide the following information:

Name, address and other contact details

Current academic and professional qualifications

Current position (if applicable) and degree program for which enrolled

Details as how the grant would be used to advance the applicant's research

Name and contact details of two referees familiar with the applicant's research

Further information is available from:

Heather Nash, GPO Box 1453, Canberra ACT 2601 ph: 02-6125.5967 Heather.Nash@anu.edu.au

Applications close on 31 July 2006 and the winner should be advised of the outcome by 31 October.

AFUW – ACT Inc. BURSARY

The AFUW – ACT Incorporated offers free board and lodging for up to four (4) weeks at a residential college at The Australian National University, Canberra to a women graduate or final year honours student from a university or tertiary institution in Australia, New Zealand, Papua New Guinea or South Pacific country. Preference may be given to applicants who are members of associations formally affiliated with the International Federation of University Women. Members of AFUW who are resident in Canberra are not eligible to apply. The Bursary will be available during the 2006-7 summer vacation. Depending on availability of accommodation, it may be possible to negotiate with the College for a stay at some other time during the 2007 academic year.

The award is open to women of any age who wish to carry out some short project, in any field, that necessitates a short stay in Canberra (e.g. to use libraries or special equipment, to learn a new technique) and which will benefit an applicant's research or professional expertise. The successful applicant will be required to make a brief report to AFUW-ACT Inc. following completion of her project. *Applications close on 31 July 2006*

Further information can be obtained by making contact at Heather.Nash@anu.edu.au or on 61-2-6125.5967 during business hours. The successful applicant will be notified no later than 31 October 2006.

Applications are to be made on the application form available from the above email address.

What is a Ghost Net?

Ghost nets are fishing nets that have been lost accidentally, deliberately discarded, or simply abandoned at sea. They travel the oceans of the world with the currents and tides continually fishing as they progress through the waters. As they are unattended and roaming, they fish indiscriminately, not only catching threatened species but undersized and protected fish as well.

Did you know? *The largest nets found in the Gulf of Carpentaria so far are Taiwanese gill nets estimated at weighing as much as 5 tonnes which would measure when stretched out approximately 4 kilometres in length with a drop of 12mts.* Damian White, WWF. In other parts of the world nets have been reported 2-3 times this size.



Photo: Dhimurru Aboriginal Land Management Corporation

What is the Carpentaria Ghost Net Programme? *"The Ghost Net Project is for people from (Indigenous) communities all around the Gulf of Carpentaria to find ways to work together to get rid of marine debris in their sea country."* Djawa Yunupingu, Dhimurru Land Management Aboriginal Corporation

In Northern Australia Indigenous Sea Rangers noted that many turtles were being captured in ghost nets that were washing up on the beaches. As much of this coastline is the breeding and foraging ground for 6 culturally and ecologically important species of marine turtle there was a real concern that so many were getting trapped and dying.

The Rangers collaborated with other non-government organisations, calling themselves "the saltwater people": a name which recognises the shared concerns & custodianship for marine wildlife. The project is managed by the Northern Gulf Resource Management Group (NGRMG) who received \$A2M over a three year period from the Natural Heritage Trust, which is an Australian Government initiative to address issues relating to the management of our natural resources. The aim of the project is three fold:

To clean up the coastline in the Gulf of Carpentaria of existing nets to stop them re-entering the ocean,

To collect useful information about these nets to assist negotiations by various parties in stopping fishing nets becoming Ghost Nets, & Capacity building of Indigenous Rangers to continue work on ghost nets beyond the life of this project.

More information about the programme see <http://www.ghcstnets.com.au/>

Canadian MTEMer now in Laos



By Erin Aucoin-Wenkoff

After just receiving the link to the latest edition of the TEMs newsletter I thought I should let you know what I'm up to. Since graduating from CDU I moved home (Canada) and back to Australia again. I left Canada at -22C and arrived in Alice to 42.5C, and thought I should probably get back on the plane! I was working at the Alice Springs Desert Park (sister park to the Territory Wildlife Park) for a few months as a T1 Zookeeper for Birds, which is surprisingly very similar to babysitting (cleaning, feeding, cleaning)! While there I met someone who knows Jannie from their work in Mauritius; small world!



Erin with partner Seamus and some giant leaves!

I'm currently living in Lao PDR working as an intern for the Environment Unit of UNDP. I've been here since the end of October, and the internship should last for six months. I've even imported my Australian boyfriend! At the moment I am matching past, present, and future biodiversity (and land management) projects with the country's National Biodiversity Strategy and Action Plan to see which are not getting enough attention - and this will help to narrow down the focus for the project I'll eventually be working on. I've also been involved in many other aspects of the organization, such as attending workshops (one where five different languages were represented so everybody had earpieces and the room was full of translators), and working closely with international consultants - both on the data-gathering side and also to edit their project proposals.



Erin with UXO used as a decoration at a neighbour's house, the top (and probably bottom) fuse

Along with the lack of a coastline, that has helped to preserve much of the Laotian environment, the rough terrain, poverty, closed borders until the '80s, and the most severe UXO (unexploded ordinance) problem in the world have also helped! Lao PDR is a relatively young country in terms of development, which makes it exciting to be here now because they are in the position to learn from everybody else's mistakes, and form their country around clean and sustainable development practices.



Erin going to visit a spirit cave near Thakhek, Khammouane province. There are many caves in the area (limestone hills) and most/all are thought to be sacred places.

The country is beautiful and the weather is perfect in the dry, though the rainy season has just broken - it seems like build-up only lasts a few days here! With a very Darwin-like electrical storms and the last week or so in Lao has been full of humidity, cicadas, and now lightening, thunder, and monsoon rains, and it's all very familiar and comforting (as well as uncomfortable!). The people here are very friendly, always giving big smiles and laughing when we try to speak the language. There are also fantastic limestone caves and pristine forests that people are trying to save. There is a lot of opportunity to preserve the unique biodiversity of Lao and I'm excited to be a part of it!!

Now if I could only convince them to stop using (and burning) so many plastic bags...of opportunity to preserve the unique biodiversity of Lao and I'm excited to be a part of it!! Now if I could only convince them to stop using (and burning) so many plastic bags...



Near Thakhek, Khammouane province, about four hours south of Vientiane. We were just going for a walk in a small village and so after a few minutes had a crowd of kids following us! I was taking their photos and playing them back on my digital camera. You can see that one of them has a slingshot around his neck and not yet wet season..

MTEMer Wins Award

An update on the last Links about **John Bonney** besides being a long time educator, he now lectures in the natural and cultural resource management program at Batchelor Institute of Indigenous Tertiary Education.

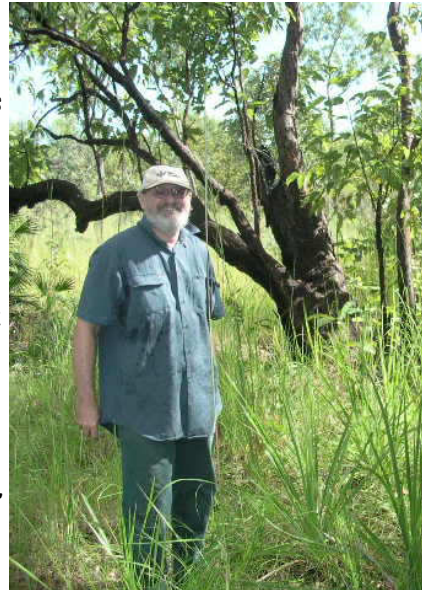
John originally trained in education, and also worked for six years with Indigenous students as a trainer at Uluru-Kata Tjuta National Park. Milestones in John's career were the pioneering of outstation education and Indigenous teacher education in Arnhem Land, holding managerial positions in Arnhem Land schools and at Uluru-Kata Tjuta National Park. While at Uluru John completed a Masters in Education Studies including a thesis on Indigenous ranger training.

In 2005 John received a medal in recognition of his contribution to Anangu ranger training and furthering joint management during the twentieth celebration ceremony of the handback of Uluru.

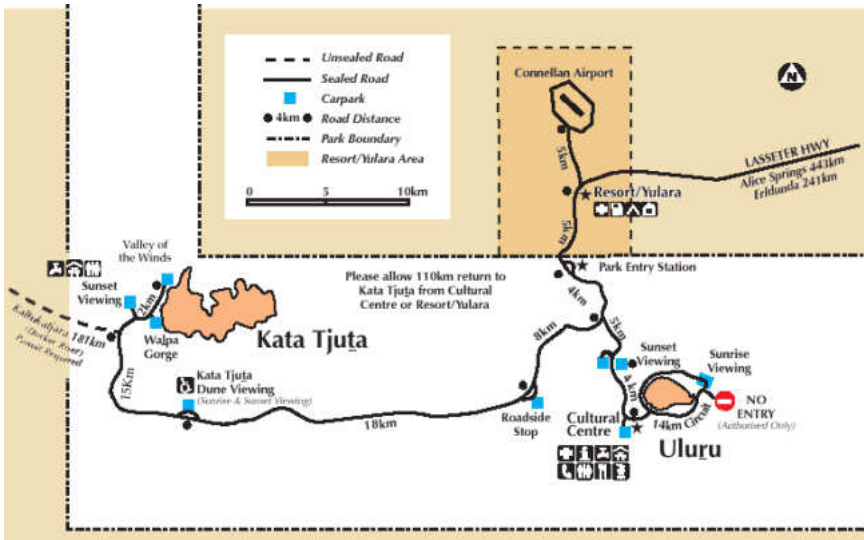


John with his medal for recognition of his contribution to Anangu ranger training and furthering joint management

He has also recently submitted his MTEM thesis, *The dilemma of listing natural heritage in the NT under the Heritage Conservation Act of NT (1991)* in which he evaluated the appropriateness of heritage listing for places of natural values.



John in the field after packing away pit traps.



Anangu Tours—Uluru - Kata Tjuta Cultural Centre

A TEMs addition

Happy news from MTEM Graduate Janelle Fisher.

Our little daughter, Jordan Jay Fisher, was born 16 February 2006 at 3.55am. Jordan weighed 3.4kg and was 50cm long at birth.

Jordan's birth-day is precious - she was born on the anniversary of her great grandmother's death. And, our 'monsoon babe' was born in the middle of a spectacular storm!

So far Jordan has been a content, sleepy and easily settled little girl.



Jordan with Janelle & Carl

Graduate Updates

Paul Davey has let us know that he is working with a great team of specialists at EWLS (Earth, Water, Life Sciences), perfect for knowledge and skills building. Based in industry with a great mix of research as well as environmental monitoring.

Justin Perry emailed to say: *I'm writing to let you know I am leaving the Territory to take up a position with CSIRO in Townsville. The position is with Sustainable Ecosystems and I'll be assisting on a number of projects which will be great learning experience. I'll be working in a new Research Associate position, across several TS CRC projects including the savanna carbon enrichment project and the grazing land erosion study at Wombianna. So the Masters has paid off already!*

Simon Gummer emailed from rainy Ireland to say he is keen to get back to the warm of the monsoonal regions, but is currently working back home. He has a job in water management with the Environment and Heritage Service of the Dept of Environment in Northern Ireland. It's a temporary job covering maternity leave. Simon reports that jobs are very scarce there at present.

NEW UNIT!

Tropical Environment Management Program

Charles Darwin University

SBI510 AN INTRODUCTION TO TROPICAL BEEF PRODUCTION

The sustainable management of tropical savannas is one of the most important challenges currently facing Australia and many other parts of the world. To meet this need, the Charles Darwin University (CDU) in conjunction with the Tropical Savannas CRC offers post graduate courses in Tropical Environmental Management (www.cdu.edu.au/ehs/science/mtem).

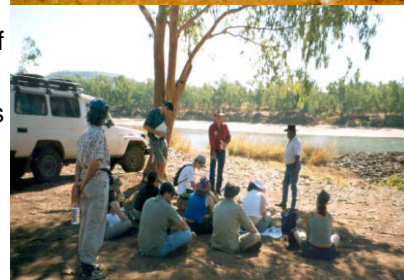
A new core unit is being developed for this program, *SBI 510 An Introduction to Tropical Beef Production*. The unit is designed for students wishing to gain an understanding of beef cattle industries in the tropics and the natural resources context in which they operate both in Australia and other parts of the world.

Students will investigate the establishment and best-practice management of beef cattle production and operations. The integration of environmental, social and economic issues that set the context for these production systems in tropical climates will be examined. Students will develop an integrated business plan for a successful cattle operation that encompasses all these factors.

The unit will feature:

- Networking with experts in production and NRM
- Ecological sustainability and beef cattle operations in the tropics
- Identification of key socio-economic issues associated with tropical beef production.
- Development of a business plan for a beef cattle operation in the tropics based on total quality management principles.

External availability with a week-long residential to provide exposure to cattle operations and enable interaction with producers and managers





Thesis Submissions

By Penny Wurm
MTEM Research Projects Coordinator
penny.wurm@cdu.edu.au

Since the last edition of TEMsLinks Justin Perry and John Doherty have submitted their theses. A big congratulations to you both!

John Doherty submitted his thesis entitled *Assessment of feral pig predation on marine turtle nesting sites on the west coast of Cape York Peninsula*. John studied externally from his home town of Weipa, but was supervised by Dr Mick Guinea (CDU) and Dr Ian Bell (QPWS). John works as a ranger with Queensland Parks & Wildlife Service.

Justin Perry also worked as a ranger with NT Parks & Wildlife Service, based in Katherine, until recently (see Graduate Updates). Justin's thesis is entitled *Status and habitat characteristics of the endangered Carpentaria Grasswren (Amytornis dorotheae) in the Northern Territory*. His project was supervised by Dr Alaric Fisher and Carol Palmer (NT DIPE), with academic support from Dr Penny Wurm (TS CRC/CDU).

Masters of Tropical Environmental Management Unit Announcement

NATURAL RESOURCES and LIVELIHOODS Unit Code: WLM404

**Delivered as an Intensive
8-13 April 2006, Alice Springs**

A new accredited unit **Natural Resources and Livelihoods** is being offered in 2006 under the **Masters of Tropical Environmental Management (WLM404)**.

The unit will be delivered by a flexible structure comprising online learning and run as a block intensive over 5 days (50 contact hours) between 8-13 April. Held during the CDU semester break this provides an opportunity to visit the region during the Easter break (14-18 April)

The intensive workshop will be led by Professor Tony Cunningham (CDU and the Desert Knowledge CRC), a world expert in ethnobotany and links between natural resources, local livelihoods, and conservation and will include guest lectures by several local leading practitioners in this field from industry and government. Theory will be integrated with Australian and international examples with an emphasis on issues pertinent to the Northern Territory.

This intensive workshop will start with a field component looking at the examples of components natural resource based enterprises, such as bush tucker trade. After the field component, the lecture series will cover five main sections: (a) **General introduction**: Poverty alleviation and the social context in which bush produce enterprises are planned or take place; (b) **sustainable harvest issues**; (c) **economic issues and bush produce enterprises**; (d) **certification** (labelling and cultural branding) and (e) **how to communicate research results to different audiences** using a range of tools, including video/DVD cost-effectively tailored to small, specific audiences. Lectures will also use video/DVD as a tool to illustrate examples of bush produce enterprises from different parts of the world (crafts, edible foods, oil seeds, butterflies).

Date: 8-13 April 2006 (Semester break and just before Easter holiday: 14-18 April)

Venue: Alice Springs

Cost: to be advised, will include course materials, field trip. Participants will be required to pay own costs if travelling to Alice Springs and accommodation and meals etc.

Registration by: 28th February 2006

Register with: Patricia.Bufter@cdu.edu.au, (08) 8946-6574

Contact: Natasha.Stacey@cdu.edu.au, (08) 8946-6268

OR

Short Course—8-13 April 2006

CONSERVATION AND BUSINESS: NATURAL RESOURCE-BASED ENTERPRISE DEVELOPMENT & LOCAL LIVELIHOODS

The Charles Darwin University is offering a short course on natural resource-based enterprise development.

The course will be led by Tony Cunningham (CDU and the Desert Knowledge CRC) a world expert in ethnobotany and the links between natural resources, local livelihoods, and conservation and will include guest lectures by several local leading practitioners in this field. Theory will be integrated with Australian and international examples with an emphasis on issues pertinent to the Northern Territory.

This course will start with a field component looking at the examples of components natural resource based enterprises, such as bush tucker trade. After the field component, the lecture series will cover five main sections: (a) **General introduction**: Poverty alleviation and the social context in which bush produce enterprises are planned or take place; (b) **sustainable harvest issues**; (c) **economic issues and bush produce enterprises**; (d) **certification** (labelling and cultural branding) and (e) **how to communicate research results to different audiences** using a range of tools, including video/DVD cost-effectively tailored to small, specific audiences. Lectures will also use video/DVD as a tool to illustrate examples of bush produce enterprises from different parts of the world (crafts, edible foods, oil seeds, butterflies).

Date: 8-13 April 2006

Venue: Alice Springs

Cost: to be advised, will include course materials, field trip

Registration by: 28th February 2006

Register with: Patricia.Bufter@cdu.edu.au, (08) 8946-6574

Contact: natasha.stacey@cdu.edu.au, (08) 8946-6268

From Rat-race to Garma (Arnhem Land)



By Anthony Kerr For seven years I had lived in Australia (from the UK) and like most, had very little idea about the history of the indigenous inhabitants of this vast continent who had managed to live in harmony with this fragile land for over 40 000 years. The Yolngu people of Arnhem Land had survived the colonial onslaught better than most and the 7th GARMA festival, promoted as one of Australia's major cultural exchange events, held in August. It was GARMA that had seen my partner, Juliana, venture north the year before, only to return two weeks later, a flood of emotion and very much a changed person. It was obvious that she had participated in something very special and from that moment onwards we planned to visit GARMA in 2005 and also investigate the possibilities of living and studying in Darwin on a permanent basis, this trip would also indicate whether we were cut out for life at the top-end.

It was late when we arrived in Darwin, we found our lodgings at a bustling backpackers and spent the next couple of days familiarising ourselves with the town and the University, where we were both thinking of studying. Juliana on occasion would recognise certain plants from her homeland of Brazil since Recife lies on similar latitude. After two days at Litchfield National Park we headed east by air towards Gove. The lack of ground illumination indicated scant settlement.

The Garma festival is presented by the Yothu Yindi foundation, and has been described as a colourful event with a deeper purpose where Indigenous and non-indigenous Australians are involved in displays of cultural practice and cross-cultural learning. There is also a key Educational Forum each year, and the focus for the 2005 festival Forum was "Indigenous Cultural Livelihoods", with major discussions, workshops and sessions on performance art (including music), visual art, and eco-tourism, as well as on mining and leadership. One could also observe performances and presentations in *miny'tji* (arts), *manikay* (songs), *bunggul* (dance) as well as, craft, bush medicine and food, with a view to a collective understanding.

Garma is a celebration of Yolngu cultural inheritance drawing clan groups mainly from Arnhem Land but also from across the nation. It appears to be a good starting point for Aboriginal communities to re-discover their identities that had been lost through contact with the *Ngapak* (White man). As stated by Mandawuy Yunupingu, Founder and Deputy Chairman of the Yothu Yindi foundation, "Garma has become a key event for bringing together Australians and fostering greater understanding between them, so it has a strong practical reconciliation element. Garma is described as a "both ways" learning process combining enjoyment and education.

My curiosity was nourished with explanations of the history and challenges of being Yolngu in this new Australia as well as peppering my brain with *Yolngu matha* (Common language in which the clans in Arnhem land communicate), although there are many dialects and many languages, English often being the 6th or 7th language. Juliana came over and dragged me away so that I could meet the family, as she had been adopted the year before, I was also

therefore also part of the family and had been previously informed of certain protocols to be observed when in the company of Yolngu. Introductions were made to the various family members and due to the complex nature of Yolngu kinship, there were certain persons that I was not permitted to communicate with or could communicate with indirectly as they were on Juliana's side of the family.

The daily activities at the three day Garma Festival Forum took the form of presentations and discussions with talks from Yolngu leaders and cultural practitioners, the Northern Land Council, Northern Territory Government, The Yothu Yindi Foundation, Federal Government,

(Continued on page 13)



(Continued from page 12)

Dhimurru Land management, amongst others.

Many of these forums were held and often hosted by Mandawuy Yunupingu, one of the festival organisers who would often introduce the various topics and speakers, including his brother Galarrwuy Yunupingu, the Chairman of the Yothu Yindi Foundation. He seemed to be the voice of GARMA. He said many things but the following quote seemed to sum up the gathering. "Garma is a dilly bag or message stick, a gathering of people, time for qualification... graduation, a healing time, unity, harmony and respect...a whisper...".

There appeared to be many pro-active organisations at the festival, holding forums. *Dhimurru* is the name of the easterly winds that bring rain and life to the region and is also the name of an Aboriginal land management corporation, one ranger stated "they have been here for thousands of years it is logical that they have a deep understanding of their land". Discussions and forums included the need for self management and the creation of partnerships with others in a "culturally appropriate manner". This last statement was something that was often repeated at Garma and seemed to indicate a pooling of knowledge and resources in order to solve a common problem that affected all Australians. This was a vision of Australia that I felt that I wished to be a part of.

Many of the problems in Arnhem Land seemed to stem from external influences/organisations entering the region and taking resources and profits and returning little but further disturbance and pollution to local communities and environment. This land is officially owned by the Yolngu yet they have little say in the important decision-making regarding its management. There were several groups from other parts of Australia who felt that Arnhem Land was the first step in the re-establishment of the Indigenous spirit. Here the communities seem relatively strong.



The afternoons would bring the much anticipated *Bunggul* (dance) which was performed in conjunction with *Manikay* (songs) to the rhythm of the *bilma* (paired sticks clapped together), the hypnotic reverberations of the *Yidaki* and chanting from the performers. An explanation of each segment of the *Manikay* and *Bunggul* would be followed by the creation of a pulse from the *Bilma* or *Yidaki* and chanting which would be the cue for the *Bunggul* to commence.

An explanation of each segment of the *Manikay* and *Bunggul* would be followed by the creation of a pulse from the *Bilma* or *Yidaki* and chanting which would be the cue for the *Bunggul* to commence.

In addition to the dances performed by the various local groups, a welcome dance was performed to honour the arrival of a Makassan delegation from Sulawesi. The Yolngu had traded with the Makassan for at least 300 years where goods such as tobacco and textiles, knives and alcohol were exchanged for the right to fish *Trepang* (sea cucumbers) which were much valued in Chinese markets. The imposition of customs duties and license fees by the Australian government early last century put a stop to this relationship in order to preserve "territorial integrity". When the seasonal rains failed to bring the Makassan traders from the north, the Yolngu waited and constructed stone patterns on the coast to indicate to would-be traders that they were still waiting for them, but the Makassan never arrived. Garma 2005 was the first time that they had officially returned to the shores of Arnhem Land in 70-odd years. A tobacco dance was performed by the Yolngu, the lead dancer puffing on a cigarette as his feet pounded the sand in front of the visitors. The Makassan were overjoyed and got to their feet and clapped and danced and the following day they reciprocated with a ceremony which was equally appreciated by the locals.

Serious land management issues exist in Australia and it appears logical that the ancient people such as the Yolngu must be respectfully consulted if there is a chance for our evolution within it. They have learned to live harmoniously with this the land for over 40 thousand years whereas we have left one ugly footprint in the couple of hundred that we have been here and show no intent to stopping this selfish destruction of this beautiful land.

Reconnection with the Aboriginal groups is a vital step if we Australians are to evolve as a whole.

Back in Bondi the rat race had lost none of its venom, a car accelerated towards me as I crossed the street, its owner screaming at me to get out of the way. A move to Darwin is looking increasingly inviting as I very much want to be part of life at the Top-end as the rat-race of Sydney is becoming increasingly soul-less.

Photos by Anthony Kerr

Joe Morrison , Executive Officer, NAILSMA will be presenting at the Exhibition Centre, Melbourne at the Coast to Coast Conference 2006, 22-25 May



Joe Morrison is both Wardaman and Torres Strait Islander. Born and raised in Katherine Northern Territory, he has spent the last decade working with remote communities throughout the Top End of the Northern Territory and more recently across north Australia to develop local action and capacity to lead "Caring for Country" initiatives. He is currently the Executive Officer of the North Australian Indigenous Land and Sea Management Alliance (NAILSMA) and co-Theme Leader within the CRC Tropical Savannas Management based out of Darwin. He is currently a member of two committees that advise the Federal Environment Minister in relation to Indigenous issues and Biodiversity arising under the Environmental Protection and Biodiversity Conservation Act.

ABSTRACT - *Lessons from the first people: Caring for our sea country across north Australia*

It is a known fact that Indigenous Australians, both Aboriginal and Torres Strait Islanders, have lived in Australia for at least 60,000 years before the present. Over this period, Indigenous peoples have managed to live sustainably both on land, and on the sea. Acting as a foundation to this longevity, is the knowledge that has been developed that intertwines practical management of resources with spiritual relations to the land itself and fellow kin – people, plants, animals and the role of ceremony. Keeping this together are the general belief systems that continue to remain in tact today in many parts, but are increasingly under immense threat from our old people passing away.

Across northern Australia, the estimated Indigenous population is projected to constitute 50% of the total population, whilst in remote parts this will be upwards of 90%. Indigenous people in the north will increasingly be the majority resident population, rather than being misinterpreted as a 'stakeholder group'. These simple facts have led to the development of the North Australian Indigenous Land & Sea Management Alliance (NAILSMA) which has a charter to support the conservation and future development of the Indigenous estate across the north.

Over the past few years, sea country planning processes have been utilized to harness Indigenous Knowledge and blend it with contemporary understanding to develop local capacity and culturally appropriate arrangements for the protection and management of our important sea country resources. Management of marine turtles and dugongs across north Australia is being undertaken by NAILSMA as a means of developing effective and long term management arrangements, whilst legitimizing the active application of Indigenous Knowledge by first Australians.

However, if these arrangements are to be effective, they need to be fully supported by the major sectors and stakeholders – commercial and recreational fishing, tourism, fisheries management agencies, federal, state and territory governments, industry and importantly green and animal welfare groups. This paper will discuss the opportunities to learn from an existing knowledge base and build upon customary management arrangements at the community level.

<http://www.iceaustralia.com/coasttocoast2006/speak.html>

MTEM Theses

Did you know that copies of some of the completed MTEM Theses are lodged in the CDU Library? They can be found in the catalogue using the search term "MTEM" and are all shelved together under catalogue number 500.72.

Graduation - 2006

<http://www.cdu.edu.au/graduation/>

25 May 2006 6.30pm Graduation courtyard

- Faculty of Education, Health and Science
- Faculty of Technology

26 May 2006 6.30pm Graduation courtyard

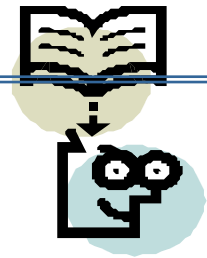
- Faculty of Law, Business and Arts
- Institute of Advanced Studies

16 June 2006 7.00pm

- Alice Springs Convention Centre
All faculties

13 October 2006 TBC

- Darwin Entertainment Centre
All faculties



New professional doctorate - Full fee-waivers for domestic students

The new professional Doctorate in Tropical Environmental Management was accredited at CDU in November 2005 and is now open for admission applications. Although a full fee-paying course, CDU is pleased to waive fees for 5 students.

If you would like more information about the program, please see the course website at <http://www.cdu.edu.au/ehs/dtem/index.html> or contact the Program Advisers Dr Lindsay Hutley (Lindsay.hutley@cdu.edu.au) or Dr Penny Wurm (penny.wurm@cdu.edu.au) if you would like a hard copy of the course information guide.

Publishing option for MTEM Research students

Dr Lynda Prior of CDU's School for Environmental Research has joined Dr Helen Larson and Steven Reynolds on the Editorial Committee of the *Northern Territory Naturalist*.

Northern Territory Naturalist is a peer-reviewed journal. The journal is registered (ISSN 0155-4093) and sent to Thomson's *Zoological Record* for abstracting (<http://scientific.thomson.com/support/products/zr/zr-serials/>). Published papers that otherwise qualify (for instance, as original research) are recognised by DEST.

With the intention of publishing an issue late in 2006, the Editorial Committee is now calling for manuscripts. Manuscripts may relate to any aspect of natural history or ecology relevant to the Northern Territory. To be considered for the 2006 issue, manuscripts should be submitted by the end of June.

Author instructions may be downloaded from <http://www.geocities.com/ntfieldnaturalists/journal.htm>. Manuscripts should be submitted, preferably in digital form, by emailing to helen.larson@nt.gov.au. During Dr Larson's absence on long service leave from May to July this year, they should be emailed to lynda.prior@cdu.edu.au.

— eJournal for Desert Knowledge CRC

The eJournal has a developmental path starting essentially as a home grown DKCRC web site, and planned to move quickly into an internationally respected eJournal. For the Duration of the DKCRC (to 2010), the proposal is that the eJournal will remain sponsored by the DKCRC and so managed. It thus will be free to public during that time. It will publish articles from International submissions where it meets the Charter of the eJournal. And, of course, the new Editorial Board will be responsible for quality and development of the journal to the necessary status required. Note however, anybody can publish from endusers or stakeholders to research students or research staff across the DKCRC. Getting published is a matter of relevance and normal double blind referee processes. For further information please email Dr Kurt Seeman: kseemann@scu.edu.au

WEB-SITES

For an update on **Tropical Savannas CRC** visit: <http://savanna.cdu.edu.au/>
and **Savanna Links**: http://savanna.ntu.edu.au/publications/savanna_links.html
Savannah Explorer: <http://savanna.ntu.edu.au/information/savannaexplorer.html>

Subscribe to the NTECOL discussion list
<http://lists.cdu.edu.au/mailman/listinfo/ntecol>

CDU's School for Environmental Research (SER) Highlights See this link to stay informed:
http://www.cdu.edu.au/research/ser_quarterley.htm



Gateways to climate change

ClimateArk is a climate change portal and search engine dedicated to promoting public policy that addresses global climate change through reductions in carbon dioxide and other emissions, renewable energy, energy conservation and ending deforestation. Developed by Ecological Internet, the non-profit organisation has other websites such as the Eco-Portal that is an information gateway designed to empower the environmental sustainability movement.

<http://www.climateark.org/>

Online guide to pests

Queensland's Department of Natural Resources and Management's weed and pest animal website has undergone a major redevelopment with many new features including:

- * A-Z listing of declared plants and animals and other significant pests
- * Regularly updated 'hot topics'
- * Current newsletters and bulletins
- * Educational resources, training and careers
- * Searchable pest distribution and predictive maps and mapping systems
- * Legislation, policies and permits
- * Pest management research

<http://www.nrm.qld.gov.au/pests>

Windows to Australia

PictureAustralia is an Internet based service that allows you to search many significant online pictorial collections at the same time. It provides a service to the visual collections of a range of public libraries, museums, academic libraries, archives and the national libraries of both Australia and New Zealand.

<http://www.pictureaustralia.org>

Q-links is the monthly bulletin of the Queensland Landcare Foundation. To subscribe, send an email to: q-links-subscribe@yahoo.com or ausubscribe@yahoogroups.com. Currently available is the Landcare Awards edition of Q-links. The first few pages includes information about some of the winners as well as photos from the awards ceremony held recently in Barcaldine. The bulletin also contains information about grants, training and other network news. Q-Links has just received a grant from Gambling Community Benefit Fund to upgrade web capability and this will help streamline the bulletin and the way it is prepared.

Audit provides NRM toolkit

The National Land and Water Resources Audit and ANZLIC - the Spatial Information Council have developed a toolkit to assist regional natural resources management groups discover, access, visualise and manage their data and information. The toolkit can be used as a text book document, teaching aid or as a series of stand-alone modules.

<http://www.nlwra.gov.au/toolkit/contents.html>

Spin a yarn on the web

The Young Australian Youth Network is an interactive website designed for young people in rural industries. It aims to provide people with a place to interact and share information with others around Australia.

<http://www.yarn.gov.au/>

(Continued on page 17)

WEB-SITES continued

(Continued from page 16)

For an update on Tropical Savannas CRC visit: <http://savanna.cdu.edu.au/>

For tracking of live fires and historical data the Natural Heritage Trust and TS-CRC supported North Australian Fire Information website at:

<http://www.firenorth.org.au/nafi/init.jsp>

Subscribe to the NTECOL discussion list <http://lists.cdu.edu.au/mailman/listinfo/ntecol>

Special issue of the Journal of Research Practice

Further papers prepared for the Land & Water Australia Integration Symposium 2004 are now on-line published in the *Journal of Research Practice: Innovations and Challenges in Multiple Domains* (JRP), an international refereed journal with a transdisciplinary focus. The journal including these papers are available in the open access mode (free of charge) in early November. The journal is supported by a consortium of institutions drawn from different parts of the world. It is published electronically by the International Consortium for the Advancement in Academic Publication (ICAAP). "The *Journal of Research Practice* aspires to become a shared space for people to explore and extend the powers of organised inquiry. Besides, it should become an indispensable resource for research education around the world." This special issue is available at: <http://jrp.icaap.org/contents.php>

The Science and Development Network (SciDev.Net) has launched a useful online resource that provides crucial data about the current state of the world's biodiversity. www.scidev.net/biofacts.

Land and Water News is a fortnightly newsletter compiled by Hallmark Editions. It provides much information about conferences, plans, guidelines, reports, study tours. Editor: Ros Stirling, rstirling@halledit.com.au or telephone 03 9521 0269, Customer enquiries: 03 8534-5000, denise@halledit.com.au www.halledit.com.au

Some interesting Qld sites: (thanks go to Savanna Links for sharing these)

Interactive online atlas

Queensland's first publicly available online atlas provides information about the State's regions, councils, towns and suburbs using interactive mapping tools. It offers a rich resource of information - from demographics and economic and social statistics to general property and suburb. Visit: <http://www.information.qld.gov.au>

Meet Qld's wildlife

The Queensland Environmental Protection Agency has launched a new website producing wildlife lists. Wildlife Online allows visitors to download species lists for areas including national parks, state forests and shires within Queensland. Visit: http://www.epa.qld.gov.au/nature_conservation/wildlife/wildlife_online

Regional ecosystem maps online

Landholders submitting vegetation management applications to the Queensland Government will have their job made easier thanks to a new web-based facility. The new service allows certified Regional Ecosystem (RE) maps to be downloaded without charge from the Internet. The information shown on the downloadable maps helps landholders understand their obligations, which is a crucial element of all applications under the Vegetation Management Act. The new service provides easy access to the information landholders need to apply under the vegetation management framework and is an important step forward. Visit: <http://www.epa.qld.gov.au/REMAPS>

River Recovery Inventory

This site provides an overview of river management activities across the Northern Territory, categorised into the following groups: -Assessment, -On-ground works, -Planning, -Research, -Tools, and -Training. It is hoped that the Inventory will be a resource for river and land managers throughout the Northern Territory and more broadly across northern Australia. <http://www.greeningaustralia.org.au/GA/NT/WhatsNew/RiverRecoveryInventory.htm>

Gwalwa-gai new-look newsletter for- CRC for Aboriginal Health.

See this link: http://www.craah.org.au/enews/Gwalwa%20-%20Gai_1/Gwalwa%20Gai%201.html#roque

Australian Academy of Science <http://www.science.org.au/newsletters/aas62.pdf>

SEMINARS and CONFERENCES

Environment and Sustainability: Policy Knowledge and Skills, 2 and 3 May 2006 (mornings only) Charles Darwin University , Casuarina Campus [course announcement \(.pdf 69kb\)](#)

Professor [Stephen Dovers](#) from [The Australian National University](#) is a leading expert on policy and institutions for sustainability. He will present a workshop on environment policy aimed at practitioners in the public and private sector, focusing on major contemporary policy issues. The workshop will combine traditional public policy knowledge and perspectives with a closer understanding of the particular nature of problems and challenges in the domains of environment, natural resource management and sustainable development, and present a range of frameworks and tools to help describe, analyse and formulate policy responses. It will combine lecture sessions and a series of linked activities to identify and explore key challenges in these domains, and to consider the nature of policy and institutional responses to those challenges. The emphasis is on generic aspects of policy processes, instruments and strategies, and the institutional settings in which these operate, rather than on specific problems, policy instruments or outcomes, ensuring the applicability of the course to participants from different agencies and sectors.

This course is targeted for researchers, land managers, environment professionals and policy makers involved in natural resource management. Participants will receive a certificate of participation on completion of the course but attendance may not be used toward future accredited courses.

The workshop will be held over two mornings: *Day 1: 8.30am - 12.30pm, Tuesday 2 May*

Registration - Complete the [enrolment form \(.doc 159KB\)](#)

Fax to 08 8946 7720 or post by 7 April to: Trisha Butler School for Environmental Research Charles Darwin University Darwin NT 0909

Note: Places are limited (maximum 25 participants)

For more information Debbie Hall , School for Environmental Research Phone: 08 8946 6427 Email: debbie.hall@cdu.edu.au

Contesting Indigenous Knowledge and Indigenous Studies Conference 2006 28-30 June 2006, Gold Coast Marriott Hotel, Surfers Paradise, Qld : engaging the interfaces between Indigenous educators, Non-indigenous educators and Indigenous Communities The [QUT Oodgeroo Unit](#) would like to welcome educators, researchers and community practitioners from around Australia and the world to the 2006 (Re)Contesting Indigenous Knowledge and Indigenous Studies Conference. Indigenous and non-Indigenous people are engaged in the recontestation of Indigenous knowledges and knowledge systems within and across many cultural interfaces. Cultural interfaces include those spaces where Indigenous peoples and non-Indigenous peoples create and act upon meaning (or misunderstanding) and can be considered as a series of ongoing, cultural dialogues ([Nakata, 2002](#)). Keynote presenters include [Professor Martin Nakata](#) and many more Indigenous Australian and international educators from various education and community sectors. For more details: Kerry Williams indigenousknowledge@qut.edu.au Web: <http://www.indigenousknowledge.qut.edu.au/index.jsp>

International Geography Olympiad Brisbane 28 June to 3 July 2006 hosted by The Royal Geographical Society of Queensland and the Australian Geography Teachers' Association host, in conjunction with the IGU 2006 Brisbane Conference. The Olympiad is receiving support from the Australian Department of Education, Science and Training and the Queensland Department of Education and the Arts.

The Olympiad is a contest for senior secondary school students. Teams are made up of four 16 to 19 year olds, accompanied by two geography educators. The Olympiad has three parts: a written test, a multimedia test and a substantial fieldwork exercise. It is run in accordance with the guidelines set down by the IGU Olympiad Task Force. This is a great opportunity to showcase the quality of the geographical skills and understanding of your brightest students. For more information on the Olympiads, please visit the website at <http://www.rgsq.qil.com.au/olympicC.htm> For more details Kath Berg at admin@rgsq.org.au

International Geographical Union IGU 2006 Brisbane Conference and joint meeting of the Institute of Australian Geographers and the New Zealand Geographical Society Regional Responses Global Changes A View from the Antipodes 3-7 July 2006 IGU 2006 Brisbane

Geographical attention on critical physical and human processes driving global change. Complex, global-scale processes exert pressures on environmental, social, cultural and economic resources at regional and local scales. It will look at regional responses in a changing world, with emphasis on tropical and arid zones, particularly in Australia, New Zealand, south-east Asia and the south-west Pacific. Professor John Holmes, Conference Chair. Professor John Holmes, University of Queensland (*Chair Organising Committee, Publications Committee* <http://www.igu2006.org/>)

(Continued on page 19)

SEMINARS and CONFERENCES continued

(Continued from page 18)

Australian Hydrographers Association Conference 2006 “Interactive Hydrography: Future Directions” 29th August – 1st September 2006 Venue: SKYCITY Casino, Darwin

The Australian Hydrographers Association Biennial Conference/ Workshop 2006, this will bring together water experts from all over the Asia Pacific Region to discuss how to better interact with the community and focus on the essentials of good data management and information sharing.

The theme of the conference is “Interactive Hydrography – Future Directions”. This reflects how understanding the dynamics of water is essential for successful infrastructure design and the ecologically sustainable use of the world’s environment. It has become increasingly important that the application of new and innovative technologies and data management are able to present information to the community and industry in an effective and useable way. The conference aims to encourage discussion on projects that improve the interaction of hydrography, industry, research and community groups. Conference Secretariat: Kristy Jamieson – kjamieson@thebestevents.com.au Ph 08 8981 1875 Fax 08 8941 2815 Website: www.ahahydro2006.com

International Conference on Environment: Survival and Sustainability 19-24 February 2007, Nicosia, Northern Cyprus The Conference aims to bring together around 2000 scholars and researchers from over 90 countries around the world to discuss environmental issues from a variety of perspectives. Relevant UN and EU Agencies as well as other international/regional organizations will be invited as sponsors or technical and organizational assistance providers to the Conference.

Recently, degradation of the environment, pollution, dwindling fresh water supplies, and particularly a series of natural mega-disasters such as typhoons, earthquakes, and landslides have refocused the world’s attention on the urgency for more research and practical steps on environmental issues.

The main theme of the conference will be the urgent need in taking steps by the international organizations, states, local authorities, and non-governmental organizations to move forward a sustainable environment. In this way, the Conference will aim at making a contribution to the worldwide debate and effort on strengthening the bridge between theory and practice in meeting environmental threats/challenges. There will be an effort to create a multi-disciplinary discussion. <http://www.neuconference.org/>

Menzies School of Health Research - Anthropology Seminar Series—Semester 1 2006

Seminars will be held in 39.1.39 (Building 39 Room 39 on the ground floor) at 4.00 p.m. each Friday of the teaching semester

April 7 “Leadership” Bill Ivory

April 14 No Seminar – Semester Break

April 21 “Navigating Intercultural Space: Land and Customary Practice in East Timor and Northern Australia”
David Mearns CDU

April 28 TBA Brett Dwyer PhD Student CDU

May 5 “Stuck nose” reasons to sniff petrol in a remote Aboriginal community’ Richard Chenhall and Kate Senior

June 2 “Steel for Stone: David Burrumarra on Macassan-Aboriginal relations and treaty-making” Ian McIntosh

The Life and Physical awards for young scientists (aged 35 and below)

These prizes are awarded only to an individual to recognise and reward outstanding research by younger scientists and to demonstrate to the public and to school students and science undergraduates in particular, that early stage career achievement in science can be of world-class importance. Further information can be found at: http://www.nhmrc.gov.au/news/noticeboard/notice06/_files/awards.htm

2006 Australian Museum Eureka Prizes The DVC(R) would like to see as many applicants as possible for these prizes from the relevant Schools. Entries are invited for the 2006 Australian Museum Eureka Prizes, Australia’s premier and most comprehensive national science awards. The Eureka prizes reward outstanding science in the categories of: Research, Leadership and Innovation, Education, Science Commercialisation. This is the largest national award scheme for research into critical environmental and sustainability issues facing Australia. A total of 20 prizes worth over \$200,000 will be awarded in 2006.

Applicants can enter themselves or be nominated by others. Entries close on Friday 5th May 2006. See <http://www.amonline.net.au/eureka> for details and online entry forms. Contact eureka@austmus.gov.au for further information.

(Continued on page 20)

Capacity Building in Indigenous Communities Training Seminar

ARDS would like to welcome you back from your Christmas/New Year break and remind you that we are currently taking bookings for our 2006 Capacity Building in Indigenous Communities Training Seminars.

The Seminars dates and Locations are as follows:

Alice Springs	01 - 02	August 2006
Canberra	25 - 26	July 2006
Darwin	02 - 03	March 2006
	05 - 06	September 2006
Nhulunbuy	21 - 22	February 2006
	07 - 08	November 2006

Conducted by

RICHARD TRUDGEN

Author of the influential book

"Why Warriors Lie Down and Die"

"Loss of purpose emerges when people become confused and do not have enough information about the world around them to take control of their own lives and develop their own future. Without good communication, clear purpose is but a faint distant hope". "Without clear purpose, human endeavour stops".

Capacity Building That Works

Examining a community development model successfully used in Arnhem Land today, this training will cover both the theory and practice of capacity building techniques effectively applied to local governance, law, economics, health and substance abuse issues. Sharing from the teachings of the Yolngu, Aboriginal people of north-east Arnhem Land, and his 30 years experience in working with Indigenous communities, Richard offers insights and solutions for addressing the current crises facing many Aboriginal communities across Australia.

Who should attend?

This seminar is highly recommended for those working in any area of Indigenous policy development, program implementation or in direct service delivery with Indigenous people who feel they would benefit from an improved understanding to make their work more effective.

Registration Deadline: One week prior to seminar

Group discounts apply to groups of 10 or more

For bookings and enquiries,

phone Karyn or Alice on (08) 8987 3910 or go to our website:

www.ards.com.au/seminars.htm

Topics covered include:

Reflection on the present situation in Arnhem Land and Indigenous Communities
 Traditional Kinship System
 Traditional Political System
 Traditional Land Owning system
 What is Capacity Building
 Capacity Building Blockers
 Human Dynamics
 Traditional Languages and their use
 Communication Across Cultures
 Different Communication Modes
 Where to start with Education
 Learning Approaches
 Understanding World View
 Dominant & Dominated Cultures
 Examples of successful projects
 Answering particular questions

Devil's Claw Festival—some volunteering

Some of you may have seen the article last year about the Devil's claw Festival. If you've got some spare time and feel like a bush trip packed with adventure and fun, why not go to Gregory National Park and participate in the Devil's Claw Festival.

The Festival runs 2 - 12 May 2005 and volunteers should be physically fit and enjoy spending time in the bush. Northern Territory Parks and Wildlife Service will provide food and transport around the Park.

If you're interested, please call Rhys Arnott on

8975 0833 or 8975 0888.

But be quick, as places are limited!



Devil's claw fruit



Devil's claw foliage

Book Review by Lynda Prior

(Researcher, School for Environmental Research, CDU)



The Weather Makers. The History and Future Impact of Climate Change by Tim Flannery The Text Publishing Co, Melbourne

This book was given to me, but I was not terribly keen to read it - would it just reiterate facts about climate change that I already know, and would it be a depressing litany of extinctions and ecological woes? To a certain extent, this was the case, but the book had

enough that was new to be worthwhile.

I particularly enjoyed the chapter entitled 'Time's Gateways', which clearly explains that the divisions of the geological time scale are based on faunal turnover in the fossil record, i.e. times when species suddenly appear or disappear. The medium-sized divisions of time, that separate geological *periods*, mark global changes in the fossil record. The greatest divisions, those separating *Eras*, are occasions of massive upheaval, when up to 95% of species vanished. The Earth has experienced such massive extinctions on 5 occasions, the last time occurring 65 million years ago when the dinosaurs disappeared. Flannery suggests that the current activities of humans may bring about the 6th ending of an Era.

The chapter 'Digging up the Dead' describes the contrasting origins of coal, oil and gas, and the relative impacts of burning these three fuels. Black coal is almost pure carbon, so burning 1 kg coal produces much more CO₂ than burning 1 kg oil or gas, which are hydrocarbons. To Flannery, coal is the worst villain in the climate change story, and he shows that proposed solutions that involve novel technologies to reduce its harm, such as carbon sequestration, are inefficient, impractical and sometimes counterproductive. The chapters describing alternatives to the current ways we generate energy, and their pros and cons, appear useful and objective.

As with Flannery's other work, this book is wide-ranging, easy to read and passionate. It provides a very good way to learn about the causes, problems and possible solutions associated with increasing greenhouse gases in our planet's atmosphere. The unfortunate thing is that those who most need to read this book are unlikely to do so.

Do you enjoy the Book Review?

Have you read a good book lately that you'd like to tell others about?

What other types of information/ articles would you like to see in TEMs Links?

Please email: cheryl.arnott@cdu.edu.au if you have some other ideas.

The third round of the EnvironmeNT Grants Program is now open!

New 'Sustainability' Focus

Marion Scrymgeour, Minister for Natural Resources, Environment and the Arts has announced new priorities for this program in 2006.

"This year we are encouraging the community to focus on projects that will help us live more sustainably so that we step lightly on the earth and leave fewer impacts behind us. We are looking for projects to help use our precious resources more efficiently in our industries and in our homes" Ms Scrymgeour said in her media release today."

Visit our website now at www.environmentgrants.nt.gov.au and read all about the new sustainability focus in 2006.

What else is different in 2006?

- This year there is a new step in the application process – the Expression of Interest form. We have added it to allow you more time to prepare your applications, provide opportunity for feedback and help you to plan your project. It will also help us to get the results of the assessment process to you as soon as possible after the closure date.
- You can also complete your application and submit it on-line or you may prefer to download the documents to your computer so that you can complete them later and return by email to this address (i.e. environmentgrants@nt.gov.au).
- The School Project component is also different with a change of focus and a new category added which will help 'Sustainable Schools' in areas located off the NT electricity grid to make the switch to solar power.

Closing dates for applications or written submissions are:

School Project Grants: Expressions of Interest due by 28 April 2006, Final applications close 5 May 2006

Individual Project Grants: Expressions of Interest due by 28 April 2006, Final applications close 9 June 2006

Operational Grants: Submissions close 5 May 2006

For project enquiries please contact: Sharman Lewis Ph: 8924 4525

For enquiries about application documents please contact: Tracey Duldig Ph: 8924 4216

Or email to: environmentgrants@nt.gov.au

Postgraduates at CDU

Have you subscribed to the CDU Post-graduate Students Association mailing list?

The CDU Post-graduate Students Association (CDUPSA) represents the interests of all post-graduate students (Honours, Masters by Coursework, Masters by Research, PhD) at CDU. CDUPSA provides information for all post-graduate students through its website as well as facilities for post-graduate students at the Casuarina campus through the Post-graduate Students Lounge located in Building 24.

Elected members of the CDUPSA Executive attend meetings with management representatives and are the voice of CDUPSA in other forums at CDU and nationally. In order for CDUPSA to be aware of issues which are important to both internal and external CDU post-graduate students, we maintain a mailing list. During the computer upgrade in late 2005, many subscribers to the CDUPSA mailing list were inadvertently bumped off the list.

If you want to be kept informed of issues and events important to CDU post-graduate students, subscribe to the CDUPSA mailing list by clicking on this link [CDU-postgrads <http://lists.cdu.edu.au/mailman/listinfo/cdu-postgrads>](http://lists.cdu.edu.au/mailman/listinfo/cdu-postgrads) and following the simple instructions. Please do this as soon as possible as the next monthly meeting of CDUPSA, to which all post-graduate students are invited, is on Friday 31 March at 12 noon in the CDUPSA Lounge at the Casuarina campus.



Network Notes

Department of Natural Resources, Environment and the Arts Fortnightly newsletter of the Natural Resource Management (NRM) network

The Natural Resource Management Board (NT)

<http://www.nreta.nt.gov.au/whatwedo/landcare/newsletters/index.html>

jobhunters

Hallmark Editions have two very useful sites, one for environmental jobs:

<http://www.envirojobs.com.au>

the other is for jobs in research:

<http://www.researchjobs.net.au>

"NRMjobs" is another excellent site advertising jobs that TEM students are likely to be interested in: <http://www.nrmjobs.com.au>

TEMS Links

Tropical Environmental Management Students' Newsletter

Vol 7 No 1 March/ April 2006

If undelivered, return to P Würm, Tropical Savannas CRC, CDU, Darwin 0909

Postage Paid
Australia

The Northern Territory Field Naturalists Club meets on the second Wednesday of the month, at 7.45 pm in the SAIKS seminar room (Bldg 30) here at CDU Casuarina. Guest speakers present informative talks on the flora and fauna of the region. There are also regular excursions.

Contact: Don Franklin: don.franklin@cdu.edu.au
phone 08 8946 6976(w) or
08 8948 1293 (h)

<http://www.geocities.com/nfieldnaturalists/>



NTECOL discussion list
TO SUBSCRIBE, PLEASE GO TO THIS
PAGE:

<http://lists.cdu.edu.au/mailman/listinfo/ntecol>

"NTECOL is a discussion list for people with an interest in the ecology and biology of the organisms and communities of Northern Australia.

The primary purpose of the list is facilitate communication among interested people and organisations so as to increase the flow of information and facilitate interaction. This could include - but need not be restricted to - announcements of seminars, workshops and conferences, discussion of topical issues, and requests for information or collaboration."

The Top End Native Plant Society meets on the third Thursday of each month at Marrara Christian School (corner of Amy Johnstone and Macmillans Rd). The meetings start at 7.30 and invited guest speakers provide insight into various aspects of Top End flora. Visit their website for more info:

<http://tenpsnt.tripod.com/>



If you want to be removed from our mailing list (electronic or hardcopy), please let me know by emailing cheryl.arnott@cdu.edu.au

Thanks